



Performance Report for: <https://www.wingaviation.com/company/>

Report generated: Thu, Jul 6, 2023 7:53 AM -0700
 Test Server Location: Vancouver, Canada
 Using: Chrome (Desktop) 103.0.5060.134, Lighthouse 9.6.4

A	Performance	Structure	L. Contentful Paint	T. Blocking Time	C. Layout Shift
	99%	92%	881ms	57ms	0.01

Top Issues

IMPACT	AUDIT	
Med-Low	Use a Content Delivery Network (CDN)	15 resources found
Med-Low	Serve static assets with an efficient cache policy	Potential savings of 107KB
Low	Use passive listeners to improve scrolling performance	1 event listener not passive
Low	Properly size images	Potential savings of 158KB
Low	Eliminate render-blocking resources <small>FCP LCP</small>	Potential savings of 71ms

Page Details



Total Page Size - 1.81MB



Total Page Requests - 46



■ HTML
 ■ JS
 ■ CSS
 ■ IMG
 ■ Video
 ■ Font
 ■ Other

How does this affect me?

Today's web user expects a fast and seamless website experience. Delivering that fast experience can result in increased visits, conversions and overall happiness.

As if you didn't need more incentive, **Google has announced that they are using page speed in their ranking algorithm.**

About GTmetrix

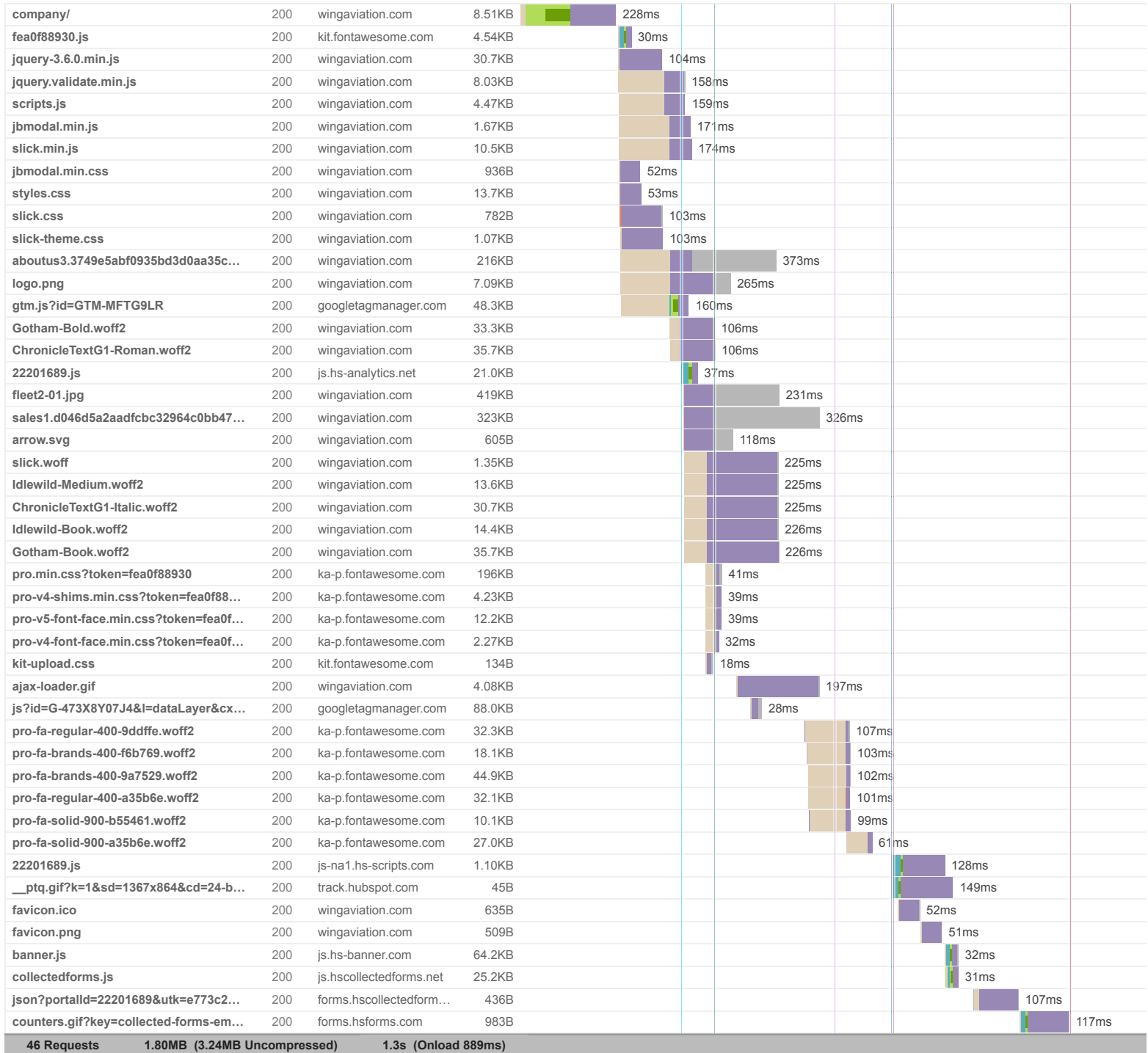


GTmetrix is developed by the good folks at **Carbon60**, a Canadian hosting company with over 27 years experience in web technology.

<https://carbon60.com/>

The waterfall chart displays the loading behaviour of your site in your selected browser. It can be used to discover simple issues such as 404's or more complex issues such as external resources blocking page rendering.

Private Jet Management & Charters Company | Wing Aviation





Performance Metrics

<p>First Contentful Paint</p> <p>How quickly content like text or images are painted onto your page. A good user experience is 0.9s or less.</p>	<p>Good - Nothing to do here</p> <p>379ms</p>	<p>Time to Interactive</p> <p>How long it takes for your page to become fully interactive. A good user experience is 2.5s or less.</p>	<p>Good - Nothing to do here</p> <p>744ms</p>
<p>Speed Index</p> <p>How quickly the contents of your page are visibly populated. A good user experience is 1.3s or less.</p>	<p>Good - Nothing to do here</p> <p>644ms</p>	<p>Total Blocking Time</p> <p>How much time is blocked by scripts during your page loading process. A good user experience is 150ms or less.</p>	<p>Good - Nothing to do here</p> <p>57ms</p>
<p>Largest Contentful Paint</p> <p>How long it takes for the largest element of content (e.g. a hero image) to be painted on your page. A good user experience is 1.2s or less.</p>	<p>Good - Nothing to do here</p> <p>881ms</p>	<p>Cumulative Layout Shift</p> <p>How much your page's layout shifts as it loads. A good user experience is a score of 0.1 or less.</p>	<p>Good - Nothing to do here</p> <p>0.01</p>

Browser Timings

Redirect	0ms	Connect	117ms	Backend	111ms
TTFB	228ms	First Paint	379ms	DOM Int.	439ms
DOM Loaded	459ms	Onload	889ms	Fully Loaded	1.3s

IMPACT	AUDIT	
Med-Low	Use a Content Delivery Network (CDN)	15 resources found
Med-Low	Serve static assets with an efficient cache policy	Potential savings of 107KB
Low	Use passive listeners to improve scrolling performance	1 event listener not passive
Low	Properly size images	Potential savings of 158KB
Low	Eliminate render-blocking resources <small>FCP LCP</small>	Potential savings of 71ms
Low	Serve images in next-gen formats	Potential savings of 488KB
Low	Avoid enormous network payloads <small>LCP</small>	Total size was 1.81MB
Low	Reduce unused JavaScript <small>LCP</small>	Potential savings of 106KB
Low	Avoid an excessive DOM size <small>TBT</small>	409 elements
Low	Efficiently encode images	Potential savings of 182KB
Low	Ensure text remains visible during webfont load <small>FCP LCP</small>	1 font found
Low	Avoid long main-thread tasks <small>TBT</small>	3 long tasks found
Low	Reduce JavaScript execution time <small>TBT</small>	71ms spent executing JavaScript
Low	Reduce unused CSS <small>FCP LCP</small>	Potential savings of 207KB
Low	Reduce initial server response time <small>FCP LCP</small>	Root document took 110ms
Low	Defer offscreen images	Potential savings of 7.09KB
Low	Minify CSS <small>FCP LCP</small>	Potential savings of 2.22KB
Low	Avoid non-composited animations <small>CLS</small>	45 animated elements found
Low	Avoid chaining critical requests <small>FCP LCP</small>	16 chains found
N/A	Largest Contentful Paint element <small>LCP</small>	1 element found
N/A	Avoid large layout shifts <small>CLS</small>	5 elements found
N/A	Minimize main-thread work <small>TBT</small>	Main-thread busy for 634ms
N/A	Reduce the impact of third-party code <small>TBT</small>	Third-party code blocked the main thread for 0ms

