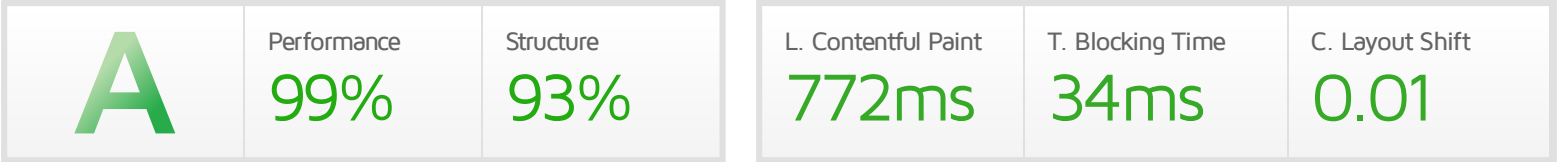




# Performance Report for: <https://www.sirenenergy.com/>

Report generated: Fri, Jul 21, 2023 8:21 AM -0700  
 Test Server Location: Vancouver, Canada  
 Using: Chrome (Desktop) 103.0.5060.134, Lighthouse 9.6.4



## Top Issues

IMPACT	AUDIT	
Med-Low	Use a Content Delivery Network (CDN)	27 resources found
Low	Serve static assets with an efficient cache policy	Potential savings of 82.4KB
Low	Avoid enormous network payloads <small>LCP</small>	Total size was 2.72MB
Low	Properly size images	Potential savings of 402KB
Low	Serve images in next-gen formats	Potential savings of 807KB

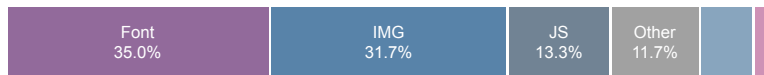
## Page Details



Total Page Size - 2.72MB



Total Page Requests - 60



■ HTML 
 ■ JS 
 ■ CSS 
 ■ IMG 
 ■ Video 
 ■ Font 
 ■ Other

### How does this affect me?

Today's web user expects a fast and seamless website experience. Delivering that fast experience can result in increased visits, conversions and overall happiness.

As if you didn't need more incentive, **Google has announced that they are using page speed in their ranking algorithm.**

### About GTmetrix

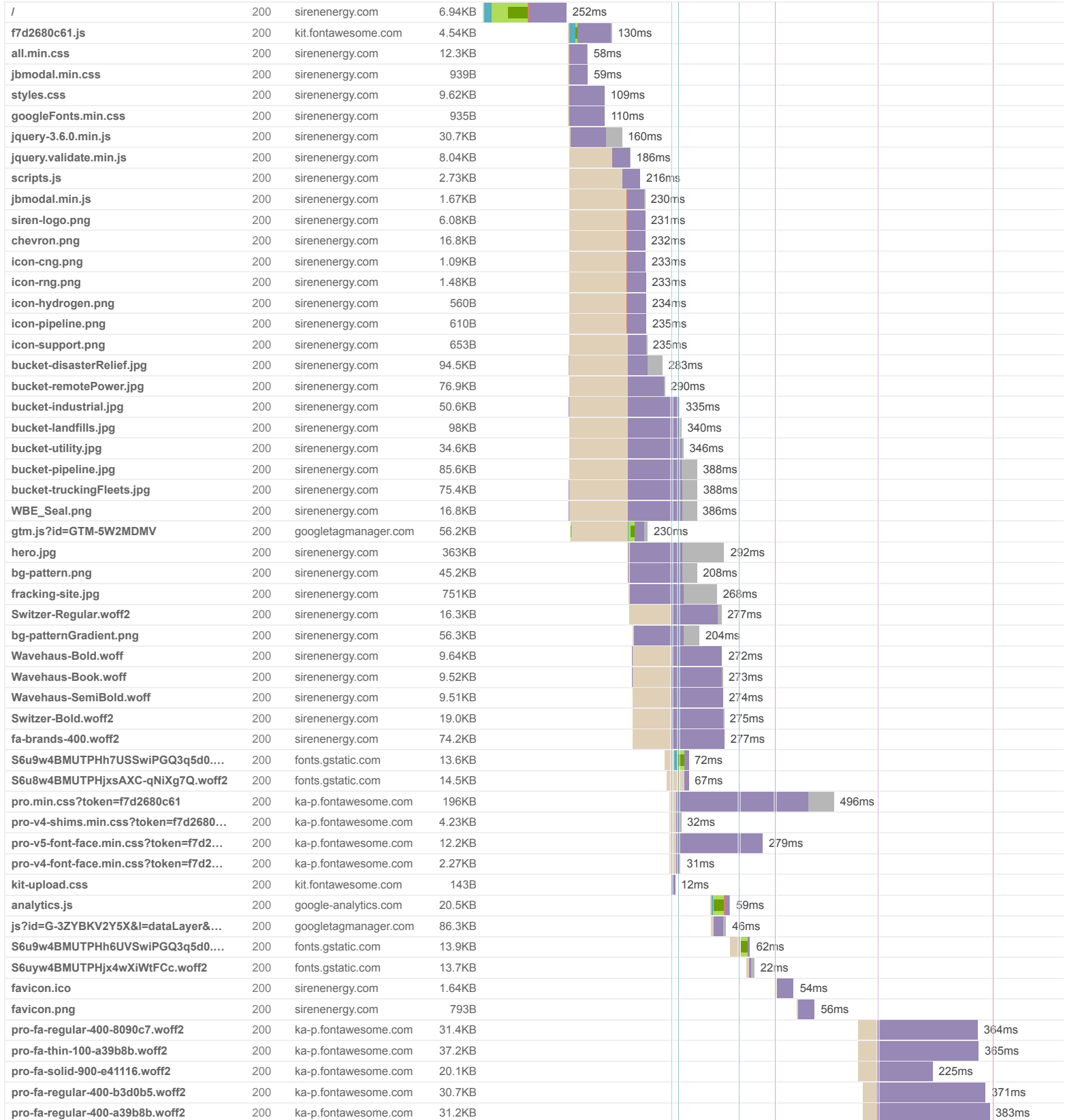


GTmetrix is developed by the good folks at Carbon60, a Canadian hosting company with over 27 years experience in web technology.

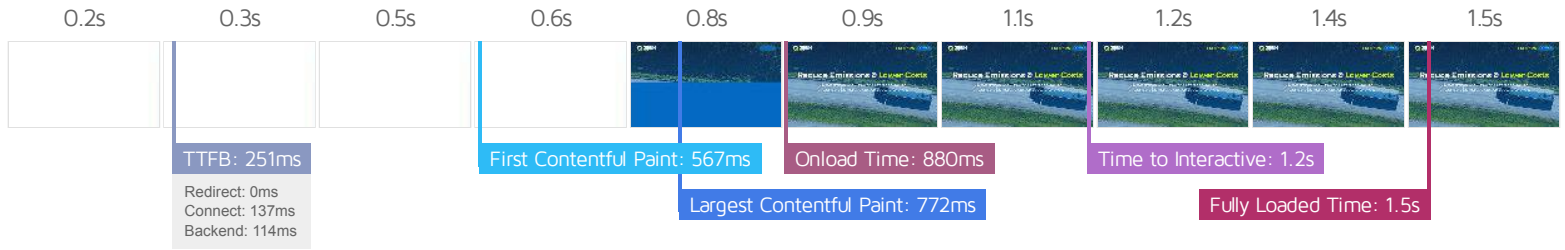
<https://carbon60.com/>

The waterfall chart displays the loading behaviour of your site in your selected browser. It can be used to discover simple issues such as 404's or more complex issues such as external resources blocking page rendering.

### Fully Integrated CNG, RNG and Hydrogen Delivery | Siren Energy, LLC







### Performance Metrics

<p><b>First Contentful Paint</b></p> <p>How quickly content like text or images are painted onto your page. A good user experience is 0.9s or less.</p>	<p>Good - Nothing to do here</p> <p><b>566ms</b></p>	<p><b>Time to Interactive</b></p> <p>How long it takes for your page to become fully interactive. A good user experience is 2.5s or less.</p>	<p>Good - Nothing to do here</p> <p><b>1.2s</b></p>
<p><b>Speed Index</b></p> <p>How quickly the contents of your page are visibly populated. A good user experience is 1.3s or less.</p>	<p>Good - Nothing to do here</p> <p><b>768ms</b></p>	<p><b>Total Blocking Time</b></p> <p>How much time is blocked by scripts during your page loading process. A good user experience is 150ms or less.</p>	<p>Good - Nothing to do here</p> <p><b>34ms</b></p>
<p><b>Largest Contentful Paint</b></p> <p>How long it takes for the largest element of content (e.g. a hero image) to be painted on your page. A good user experience is 1.2s or less.</p>	<p>Good - Nothing to do here</p> <p><b>772ms</b></p>	<p><b>Cumulative Layout Shift</b></p> <p>How much your page's layout shifts as it loads. A good user experience is a score of 0.1 or less.</p>	<p>Good - Nothing to do here</p> <p><b>0.01</b></p>

### Browser Timings

Redirect	0ms	Connect	137ms	Backend	114ms
TTFB	251ms	First Paint	566ms	DOM Int.	566ms
DOM Loaded	587ms	Onload	880ms	Fully Loaded	1.5s

IMPACT	AUDIT	
Med-Low	<b>Use a Content Delivery Network (CDN)</b>	27 resources found
Low	<b>Serve static assets with an efficient cache policy</b>	Potential savings of 82.4KB
Low	<b>Avoid enormous network payloads</b> <small>LCP</small>	Total size was 2.72MB
Low	<b>Properly size images</b>	Potential savings of 402KB
Low	<b>Serve images in next-gen formats</b>	Potential savings of 807KB
Low	<b>Eliminate render-blocking resources</b> <small>FCP LCP</small>	Potential savings of 0 ms
Low	<b>Ensure text remains visible during webfont load</b> <small>FCP LCP</small>	8 fonts found
Low	<b>Avoid long main-thread tasks</b> <small>TBT</small>	2 long tasks found
Low	<b>Reduce JavaScript execution time</b> <small>TBT</small>	35ms spent executing JavaScript
Low	<b>Reduce unused CSS</b> <small>FCP LCP</small>	Potential savings of 208KB
Low	<b>Reduce initial server response time</b> <small>FCP LCP</small>	Root document took 114ms
Low	<b>Defer offscreen images</b>	Potential savings of 688KB
Low	<b>Minify CSS</b> <small>FCP LCP</small>	Potential savings of 2.48KB
Low	<b>Avoid non-composited animations</b> <small>CLS</small>	6 animated elements found
Low	<b>Avoid chaining critical requests</b> <small>FCP LCP</small>	12 chains found
Low	<b>Reduce unused JavaScript</b> <small>LCP</small>	Potential savings of 59.8KB
N/A	<b>Avoid an excessive DOM size</b> <small>TBT</small>	241 elements
N/A	<b>Largest Contentful Paint element</b> <small>LCP</small>	1 element found
N/A	<b>Avoid large layout shifts</b> <small>CLS</small>	2 elements found
N/A	<b>Minimize main-thread work</b> <small>TBT</small>	Main-thread busy for 742ms
N/A	<b>Reduce the impact of third-party code</b> <small>TBT</small>	Total size was 791KB
N/A	<b>User Timing marks and measures</b>	