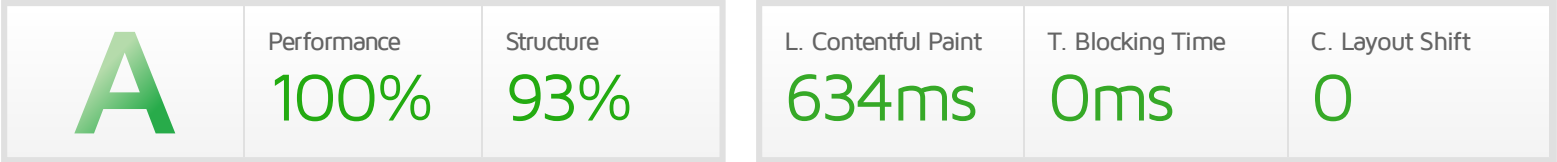




## Performance Report for: https://theblueoxgroup.com/

Report generated: Fri, Feb 18, 2022 12:53 PM -0800  
 Test Server Location: Vancouver, Canada  
 Using: Chrome (Desktop) 90.0.4430.212, Lighthouse 8.3.0



### Top Issues

IMPACT	AUDIT	
Med-Low	Use a Content Delivery Network (CDN)	13 resources found
Med-Low	Serve static assets with an efficient cache policy	Potential savings of 138KB
Low	Eliminate render-blocking resources	Potential savings of 124ms
Low	Efficiently encode images	Potential savings of 542KB
Low	Properly size images	Potential savings of 84.9KB

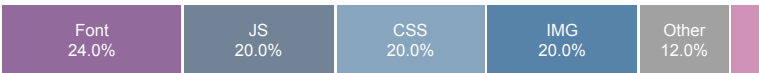
### Page Details



Total Page Size - 1.54MB



Total Page Requests - 25



■ HTML 
 ■ JS 
 ■ CSS 
 ■ IMG 
 ■ Video 
 ■ Font 
 ■ Other

### How does this affect me?

Today's web user expects a fast and seamless website experience. Delivering that fast experience can result in increased visits, conversions and overall happiness.

As if you didn't need more incentive, **Google has announced that they are using page speed in their ranking algorithm.**

### About GTmetrix

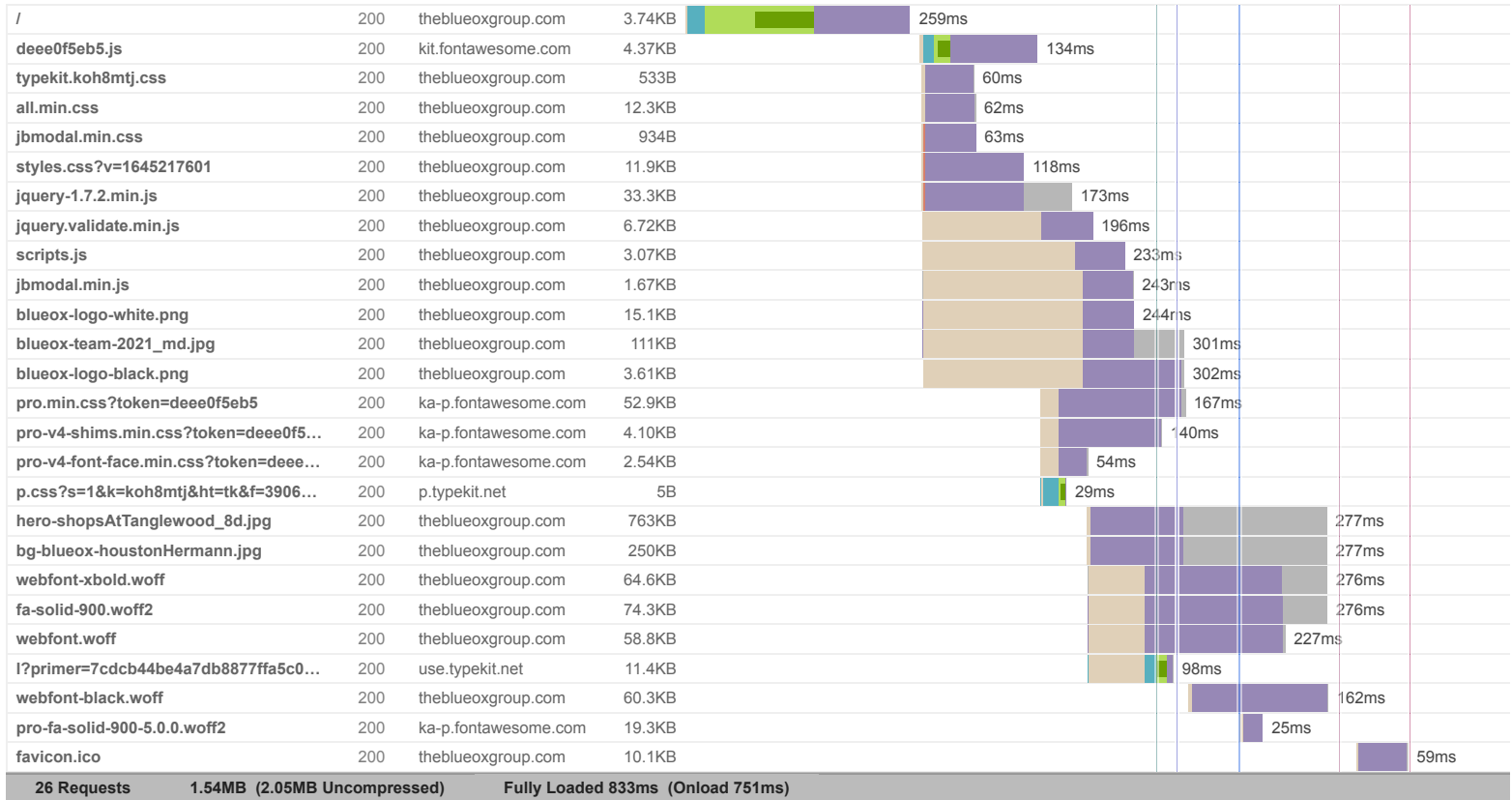


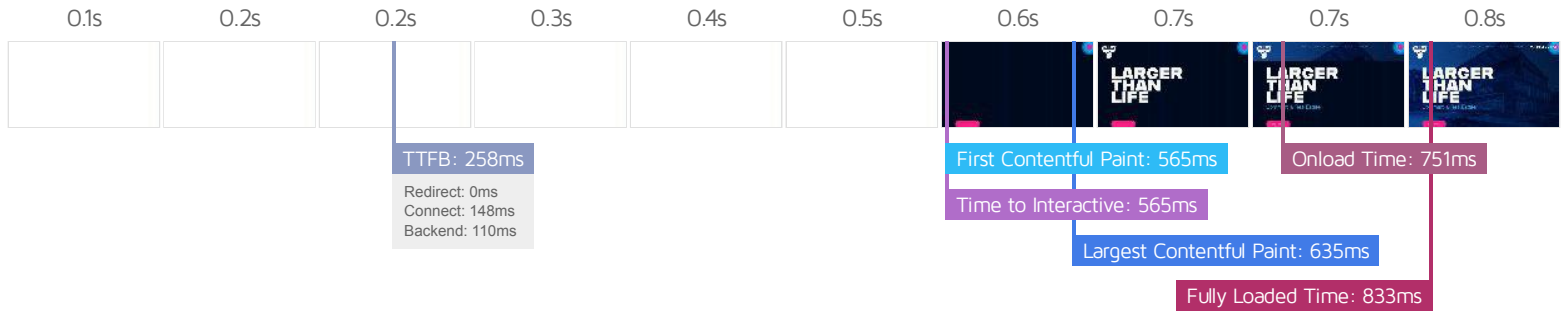
GTmetrix is developed by the good folks at Carbon60, a Canadian hosting company with over 26 years experience in web technology.

<https://carbon60.com/>

The waterfall chart displays the loading behaviour of your site in your selected browser. It can be used to discover simple issues such as 404's or more complex issues such as external resources blocking page rendering.

### Commercial Real Estate Brokerage | The Blue Ox Group





### Performance Metrics

<p><b>First Contentful Paint</b></p> <p>How quickly content like text or images are painted onto your page. A good user experience is 0.9s or less.</p>	<p>Good - Nothing to do here</p> <p><b>564ms</b></p>	<p><b>Time to Interactive</b></p> <p>How long it takes for your page to become fully interactive. A good user experience is 2.5s or less.</p>	<p>Good - Nothing to do here</p> <p><b>564ms</b></p>
<p><b>Speed Index</b></p> <p>How quickly the contents of your page are visibly populated. A good user experience is 1.3s or less.</p>	<p>Good - Nothing to do here</p> <p><b>712ms</b></p>	<p><b>Total Blocking Time</b></p> <p>How much time is blocked by scripts during your page loading process. A good user experience is 150ms or less.</p>	<p>Good - Nothing to do here</p> <p><b>0ms</b></p>
<p><b>Largest Contentful Paint</b></p> <p>How long it takes for the largest element of content (e.g. a hero image) to be painted on your page. A good user experience is 1.2s or less.</p>	<p>Good - Nothing to do here</p> <p><b>634ms</b></p>	<p><b>Cumulative Layout Shift</b></p> <p>How much your page's layout shifts as it loads. A good user experience is a score of 0.1 or less.</p>	<p>Good - Nothing to do here</p> <p><b>0</b></p>

### Browser Timings

Redirect	0ms	Connect	148ms	Backend	110ms
TTFB	258ms	DOM Int.	526ms	DOM Loaded	541ms
First Paint	565ms	Onload	751ms	Fully Loaded	833ms

IMPACT	AUDIT	
Med-Low	<b>Use a Content Delivery Network (CDN)</b>	13 resources found
Med-Low	<b>Serve static assets with an efficient cache policy</b>	Potential savings of 138KB
Low	<b>Eliminate render-blocking resources</b>	Potential savings of 124ms
Low	<b>Efficiently encode images</b>	Potential savings of 542KB
Low	<b>Properly size images</b>	Potential savings of 84.9KB
Low	<b>Serve images in next-gen formats</b>	Potential savings of 835KB
Low	<b>Avoid an excessive DOM size</b>	135 elements
Low	<b>Avoid enormous network payloads</b>	Total size was 1.55MB
Low	<b>Ensure text remains visible during webfont load</b>	5 fonts found
Low	<b>Avoid long main-thread tasks</b>	1 long task found
Low	<b>Reduce JavaScript execution time</b>	13ms spent executing JavaScript
Low	<b>Reduce unused CSS</b>	Potential savings of 86.0KB
Low	<b>Reduce initial server response time</b>	Root document took 109ms
Low	<b>Avoid large layout shifts</b>	1 element found
Low	<b>Minify CSS</b>	Potential savings of 2.89KB
Low	<b>Avoid chaining critical requests</b>	10 chains found
Low	<b>Reduce unused JavaScript</b>	Potential savings of 20.6KB
N/A	<b>Largest Contentful Paint element</b>	1 element found
N/A	<b>Minimize main-thread work</b>	Main-thread busy for 234ms
N/A	<b>Reduce the impact of third-party code</b>	Total size was 95.6KB
N/A	<b>User Timing marks and measures</b>	